

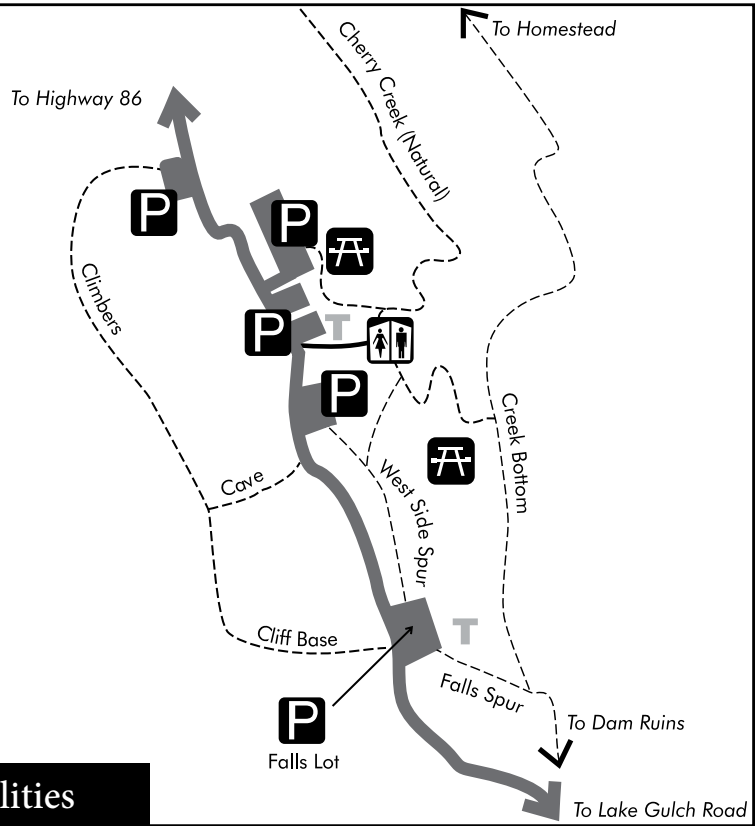
Regulations

- Ground fires are prohibited (cook stoves and self-contained grills are allowed).
 - Vehicles must remain on designated roadways.
 - Pets must be on a leash not exceeding six feet in length. Dispose of pet waste in garbage.
 - No hunting is allowed in the park.
 - Camping is prohibited.
 - Gathering of artifacts, vegetation and timber is prohibited.
- A complete copy of park regulations is available at the entrance station.



Facilities

Facilities on the east side include a visitor center, a spectacular handicap accessible Canyon View Nature Trail, 12 miles of hiking trails, flush toilets, picnic areas, as well as a group picnic area. Most facilities on the east side of the park are accessible and barrier free. The east gate is open at 8:00 a.m. daily. West side facilities include parking, one pit toilet and 20 picnic tables. Parking at the ruins of the dam is prohibited. For more information call (303) 688-5242.



Castlewood Canyon State Park offers splendid opportunities for hiking, picnicking, rock climbing, sight-seeing, photography and nature study. The park preserves 2,004 acres of the ecologically unique Black Forest region of Colorado. Visitors will also enjoy spectacular panoramic views of the Front Range and Pikes Peak.

Trails along the Cherry Creek wind past the ruins of the Castlewood Dam (circa 1890). Exhibits and a slide show in the visitor center retell the dramatic events of August 3, 1933, when the dam broke and caused the second worst flood in Denver's history.

Activities

From sunrise to sunset, Castlewood Canyon State Park is open for: sightseeing, picnicking, hiking, photography, nature study and technical rock climbing.

Hiking and trail use:

- Please stay on designated trails.
- Mountain bike use is restricted to roads and Cherry Creek Regional Trail.
- Horseback riding is only permitted on the Cherry Creek Regional Trail.
- Pets must be kept on a leash no longer than six feet. Pet waste must be disposed of in garbage can.
- Pets are not permitted on the East Canyon Trail.

Rock climbing:

- The installation of bolts and fixed protection is prohibited.
- Please use designated trails for access.
- Climbing and bouldering are not permitted in the East Canyon Preservation Area.



7 Principles

- Plan ahead and prepare
- Travel and camp on durable surfaces
- Dispose of waste properly
- Leave what you find
- Minimize campfire impacts
- Respect wildlife
- Be considerate of other visitors.

Like all of us, Castlewood Canyon State Park needs friends too! The Friends of Castlewood Canyon State Park is a non-profit group that raises funds for special projects and provides support in many ways. Their work enhances the experience of every visitor and helps protect and preserve this special place. Like to join us? Applications for membership are available at the Park Visitor Center or by visiting castlewoodfriends.org



Passes and Permits

All visitors entering Castlewood Canyon State Park are required to display a current park pass. Park passes are valid at any Colorado State Park. A daily pass is valid from the day purchased until noon the following day. An annual pass is valid for a year from purchase, and may be issued for an individual vehicle or as a transferable pass that hangs from the rear-view mirror. Passes are available at main park entrances and self-service dispensers. Vehicles displaying Colorado Disabled Veteran (DV) license plates are admitted free without a pass. Colorado residents 64 years of age or older qualify for an Aspen Leaf annual pass, available at a discounted rate.

Directions

To get to Castlewood Canyon State Park, take 1-25 to Castle Rock. Take the Founders Parkway exit on Hwy 86. Take Hwy 86 into Franktown. At the stoplight turn south to Hwy 83. Go five miles to the park entrance.

There are two entrances to Castlewood Canyon State Park. The main (or east) entrance is off of Hwy 83, five miles south of Franktown. The east entrance facilities include a visitor center, flush restrooms, event facilities, picnic areas with grills and a paved roadway.

The west entrance is accessed from Castlewood Canyon Road off of Hwy 86. The west entrance is a less-developed portion of the park, including a gravel road, gravel parking lots, a few picnic tables and vault toilets.



Castlewood Canyon State Park

2989 South Highway 83 • Franktown, CO 80116
(303) 688-5242

E-mail: castlewood.canyon@state.co.us

cpw.state.co.us



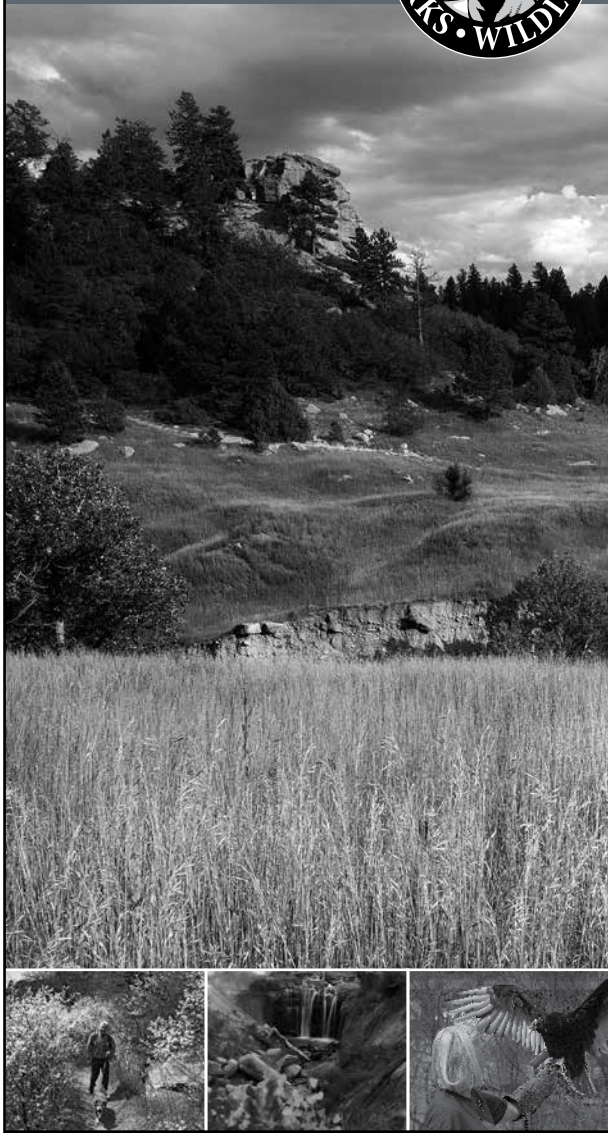
Funded in part by Great Outdoors Colorado through Colorado Lottery proceeds.



COLORADO PARKS & WILDLIFE

Castlewood Canyon State Park

ENJOY YOUR STATE PARKS



cpw.state.co.us

Castlewood Canyon State Park

